

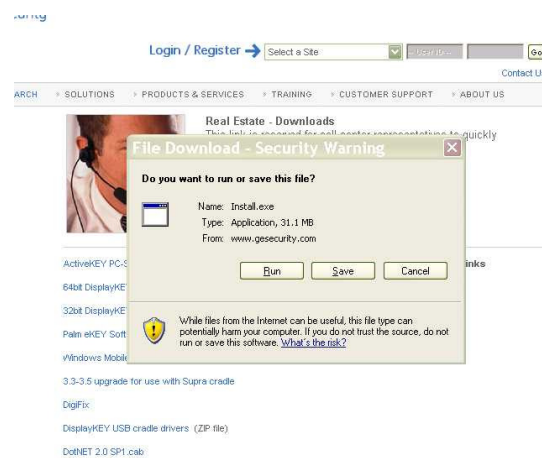
USB Cable Software Download Instructions—ActiveKEY PC Sync

Your ActiveKEY updates automatically by connection wirelessly to a compatible cellular network. If you are out of coverage range for more than 24 hours, your ActiveKEY displays this message:
Key is expired/Update now.

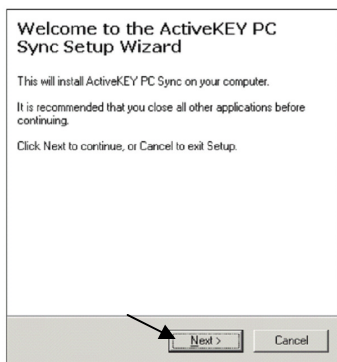
You can update your ActiveKEY by connecting to your computer with an Internet connection. Before you can connect your key, you must install the ActiveKEY PC Sync software on your computer.

You can download the ActiveKEY PC Sync software from the GE Security Supra website. To download the software, do the following:

1. Go to *www.supraekey.com*
2. Under Related Links—Click **Software Downloads**
3. Select ActiveKEY PC Sync Software
4. Select **Save to the Desktop** when the dialog box opens.
5. A Shortcut will appear on your desktop labeled *Install*
6. Double click the Install shortcut

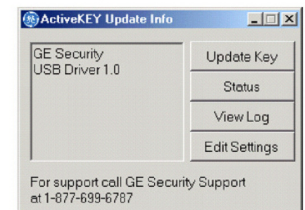


The software is downloaded to your computer and the ActiveKEY PC Sync Setup Wizard opens:



Click Next and follow the instructions in the installation wizard to install ActiveKEY PC Sync software on your computer and connect your ActiveKEY for the first time.

After you have installed the ActiveKEY PC Sync software, it will prompt you to connect your USB cable (provided) and your ActiveKEY to your computer. Your ActiveKEY can now be updated any time by connecting it to your computer. When you connect your ActiveKEY, the *ActiveKEY Update Info* window opens.



Your PC Sync software should launch each time you log on to your computer. To be sure it does: Right click onto the small GE Security Icon on the lower right of your computer screen and Select *Launch on Start Up*

